

**HIRSCH** Porozell



**Pool System Blocks**

made of EPS\*

HIRSCH Servo Group	3
Production sites HIRSCH Porozell	4
Sales Areas Pool System Blocks	5
What we stand for	7
Benefits of HIRSCH	
Pool System Blocks	9

#### Products

HIRSCH Double Density Blocks	10
HIRSCH IGLU 2000 Blocks	11
HIRSCH Power S Blocks	12
HIRSCH Polyline XXL Blocks	13
HIRSCH Overflow Gutter System	14
End Gates and Spread Cotters	15



# HIRSCH Servo Group



**Europe's largest insulation manufacturer,** Technology leader in the field of preexpanders and blockmolds



Nearly 50 years of international experience in the **EPS industry**



**26 production facilities** in Austria, Germany, France, Hungary, Poland, Romania, Slovakia and Ukraine, 2 joint ventures in France



**Ø1.500 employees**



PRODUCTION SITES HIRSCH POROZELL

SALES AREAS POOL SYSTEM BLOCKS

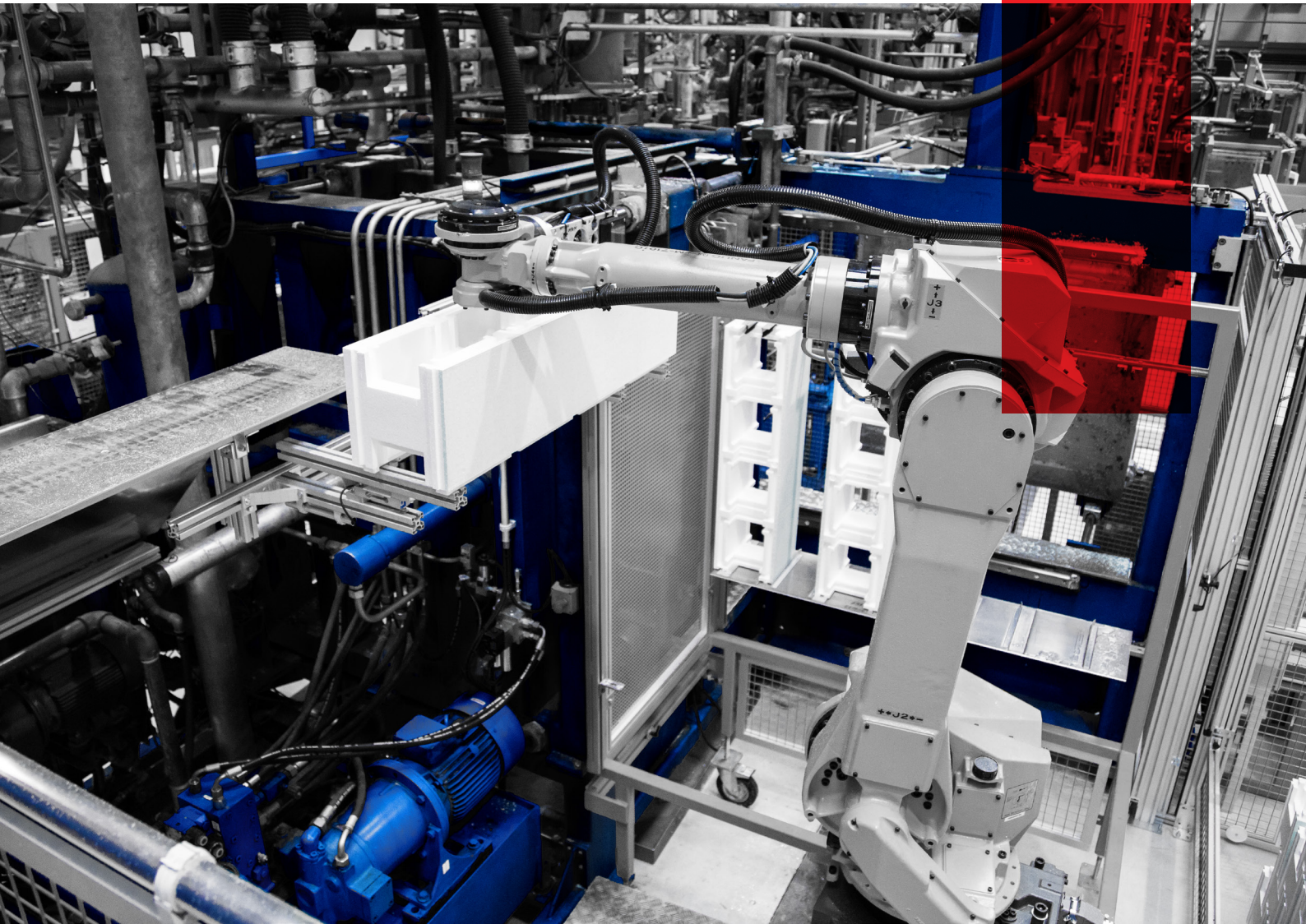
## Where we are



- |                                     |                                    |
|-------------------------------------|------------------------------------|
| 1 Glanegg, <b>Austria</b>           | 14 Sárvár, <b>Hungary</b>          |
| 2 Guipry, <b>France</b>             | 15 Jászfényszaru, <b>Hungary</b>   |
| 3 Bazoches, <b>France</b>           | 16 Nyiregyháza, <b>Hungary</b>     |
| 4 Compiègne, <b>France</b>          | 17 Wrocław, <b>Poland</b>          |
| 5 Saint-Michel, <b>France</b>       | 18 Łódź, <b>Poland</b>             |
| 6 Vienne, <b>France</b>             | 19 Cluj, <b>Romania</b>            |
| 7 Béziers, <b>France</b>            | 20 Timisoara, <b>Romania</b>       |
| 8 Rheda-Wiedenbrück, <b>Germany</b> | 21 Bukarest, <b>Romania</b>        |
| 9 Grombach, <b>Germany</b>          | 22 Sfântu Gheorghe, <b>Romania</b> |
| 10 Ebrach, <b>Germany</b>           | 23 Podolíneč I, <b>Slovakia</b>    |
| 11 Micheln, <b>Germany</b>          | 24 Podolíneč II, <b>Slovakia</b>   |
| 12 Abstatt, <b>Germany</b>          | 25 Beregovo, <b>Ukraine</b>        |
| 13 Bad Waldsee, <b>Germany</b>      | 26 Tscherkassy, <b>Ukraine</b>     |

## Where we deliver





## What we stand for

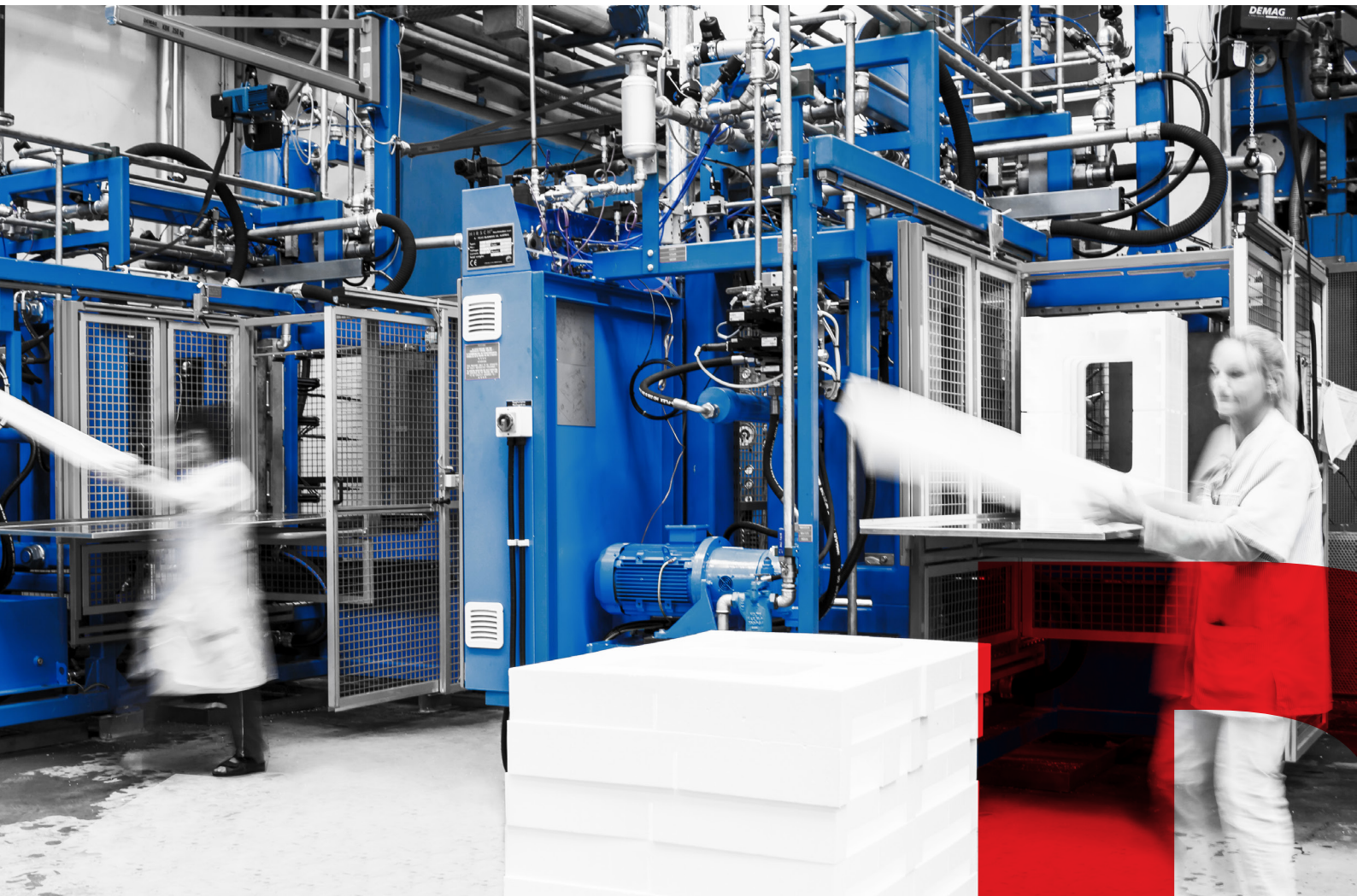
Our top priority is to maintain consistently high quality in all our products, processes, and services at all times. That is what the HIRSCH Servo Group stands for. What plays a major role in achieving this is to constantly implement an economical and effective quality management system to ISO 9001. Continuous quality control ensures that our HIRSCH Porozell products are always tested before being shipped to the customer.

It is not only the HIRSCH Servo Group's products that play a sustainable role in environmental and climate protection: sustainability is of major importance to the entire Group in the joint value chain.

The contribution that the HIRSCH Servo Group makes to responsible use of limited resources has been certified with the ISO 14001 environmental management system. Based on this environmental management standard, the HIRSCH Servo Group's services are continuously improved to increase efficiency and promote conservation of all resources.







# Benefits of HIRSCH Pool System Blocks

All benefits of  
HIRSCH Pool  
System Blocks



- **Good stiffness and fast processing** due to proven plug-in connection
- **Pool blocks can always be installed offset (misalignment)**, no connection with cable ties of straight and round arch blocks necessary
- **Easy installation** of the pool technic equipment (skimmer, spotlights, injection nozzle, ect.)
- **Tread-resistant clamping-rabbit panels** provides an optimal isolation of the pool bottom
- **Round arch blocks** enables roman stairs and **individual pool shapes**
- **Smooth interior walls**
- **Good isolation features**
  - Under specific conditions the blocks can be **filled with ready-mixed concrete by using a pump up to 200 cm pool height**
- **Low-cost completion** with prefabricated PVC foil tank, possible for many pool shapes without inside stairs
- The clipping profile for the foil tank enables the pool owner to **change the foil tank without any problems after abrasion by himself**
- **Pools with inside stairs or special shapes** can also be lined with **1.5 mm liner on site**

# HIRSCH Double Density Blocks



## 1 IGLU Combi

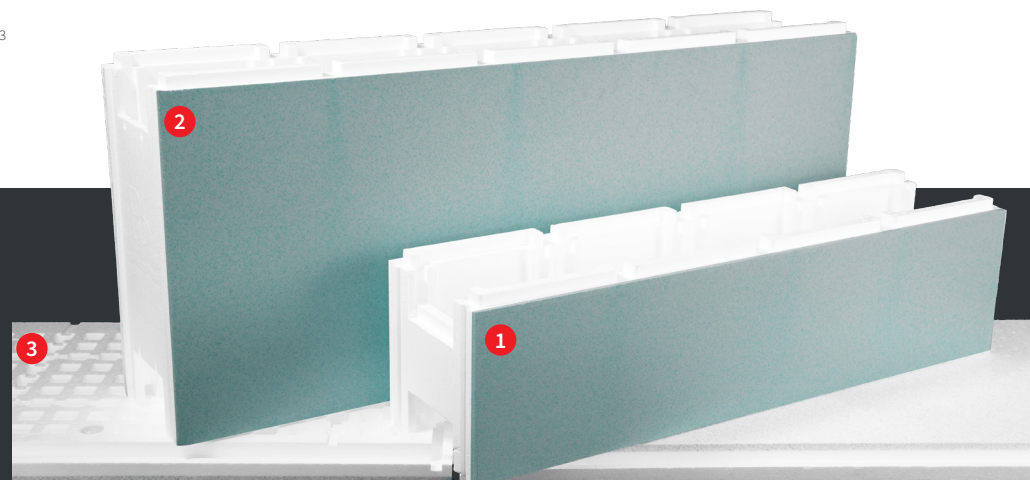
- **Length:** 1,000 mm
- **Width:** 250 mm
- **Height:** 250 mm
- **Density:** 25/80 kg/m<sup>3</sup> | 40/80 kg/m<sup>3</sup>
- **Pool depth:** 1 | 1.25 | 1.5 | 1.75 | 2 m
- **Special features:** Compatible with IGLU Combi, Polyline and overflow gutter system

## 2 Partner Stone Massive

- **Length:** 1,250 mm
- **Width:** 250 mm
- **Height:** 500 mm
- **Density:** 30/80 kg/m<sup>3</sup>
- **Pool depth:** 1 | 1.5 | 2 m
- **Special features:** Compatible with IGLU Combi, Polyline and overflow gutter system

## 3 Clamping Rebate Base Plate Combi

- **Length:** 1,000 mm
- **Width:** 500 mm
- **Height:** 50 mm
- **Density:** 25/80 kg/m<sup>3</sup>



# HIRSCH IGLU 2000 Blocks

## 1 IGLU 2000 Straight Block

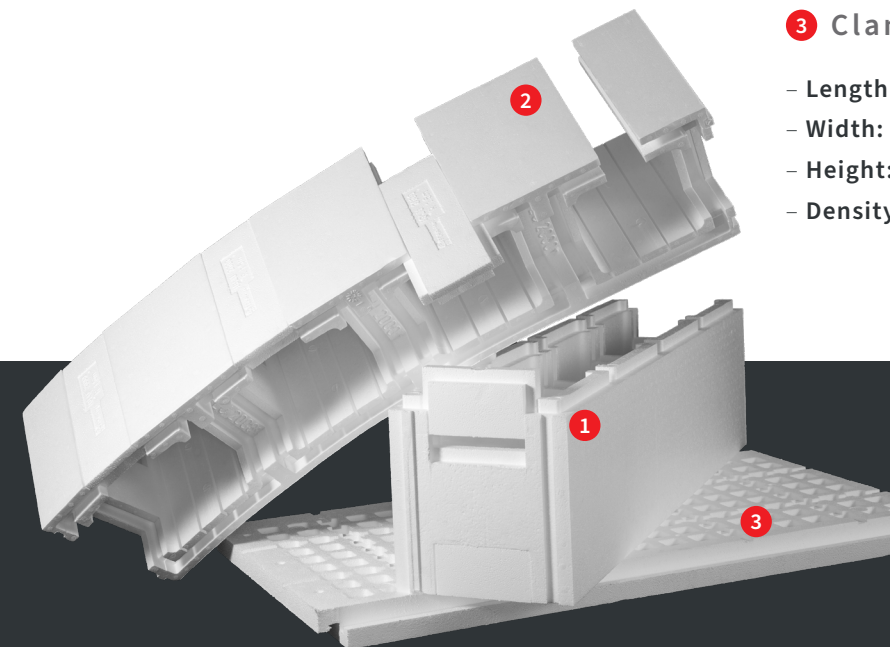
- **Length:** 1,000 mm
- **Width:** 250 mm
- **Height:** 250 mm
- **Density:** 25 kg/m<sup>3</sup> | 30 kg/m<sup>3</sup> | 40 kg/m<sup>3</sup>
- **Pool depth:** 1 | 1.25 | 1.5 | 1.75 | 2 m
- **Special features:** Compatible with IGLU Combi, Polyline and overflow gutter system

## 2 IGLU 2000 Round Arch Block

- **Length:** 1,000 mm
- **Width:** 250 mm
- **Height:** 250 mm
- **Density:** 25 kg/m<sup>3</sup> | 30 kg/m<sup>3</sup>
- **Radius possibilities:** 0 | 1 | 1.25 | 1.5 | 2 | 2.5 | 3 | 3.5 | 5 | 7 m
- **Special features:** Compatible with round arch block from the Polyline system

## 3 Clamping Rebate Base Plate

- **Length:** 1,000 mm
- **Width:** 500 mm
- **Height:** 50 mm
- **Density:** 25 kg/m<sup>3</sup> | 40 kg/m<sup>3</sup>





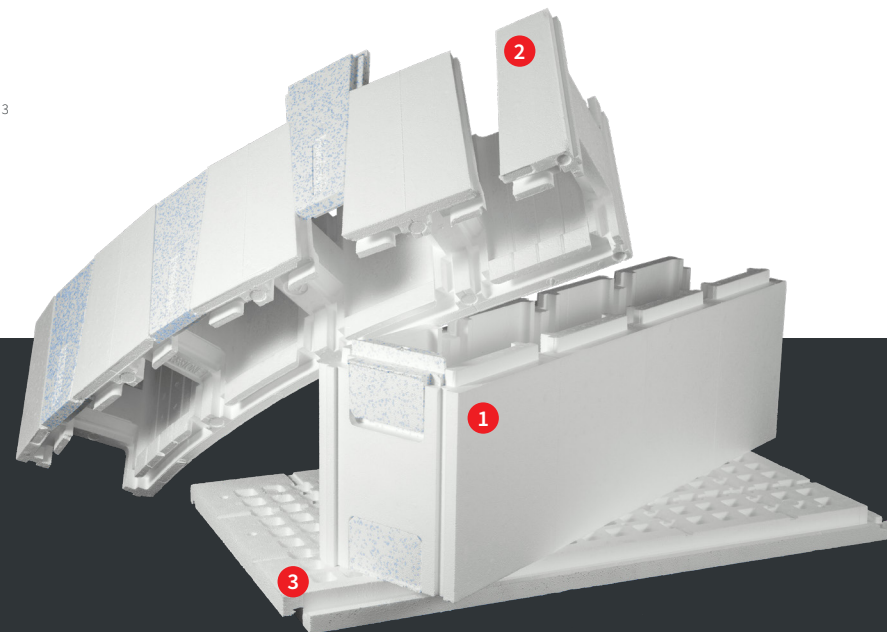
# HIRSCH Power S Blocks

## 1 Power S Straight Block

- **Length:** 1,000 mm
- **Width:** 250 mm
- **Height:** 300 mm
- **Density:** 25 kg/m<sup>3</sup> | 30 kg/m<sup>3</sup> | 40 kg/m<sup>3</sup>
- **Pool depth:** 0.9 | 1.2 | 1.5 | 1.8 m

## 3 Clamping Rebate Base Plate

- **Length:** 1,000 mm
- **Width:** 500 mm
- **Height:** 50 mm
- **Density:** 25 kg/m<sup>3</sup> | 40 kg/m<sup>3</sup>



## 2 Power S Round Arch Block

- **Length:** 1,000 mm
- **Width:** 250 mm
- **Height:** 300 mm
- **Density:** 25 kg/m<sup>3</sup> | 30 kg/m<sup>3</sup>
- **Radius possibilities:**  
0 | 1 | 1.25 | 1.5 | 2 | 2.5 | 3 | 3.5 | 5 | 7 m

# HIRSCH Polyline XXL Blocks

## 1 Polyline XXL Straight Block

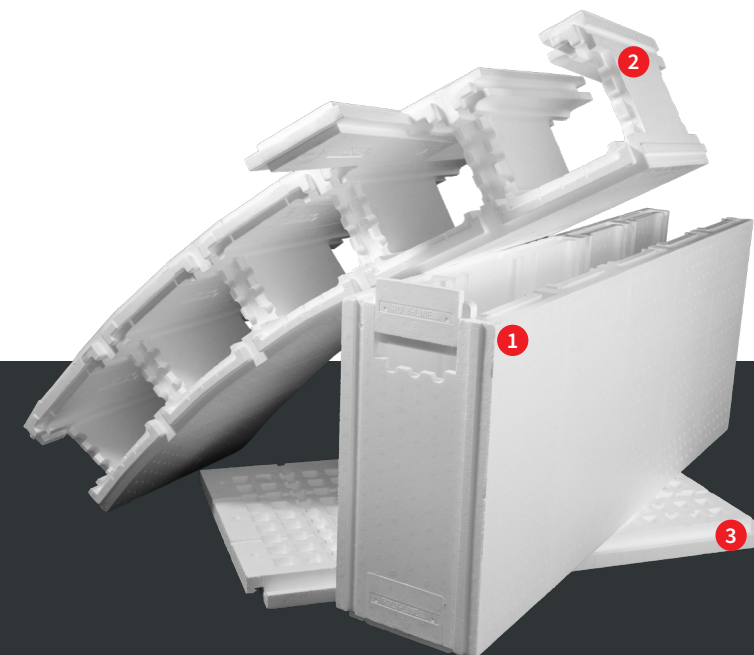
- **Length:** 1,250 mm
- **Width:** 250 mm
- **Height:** 500 mm
- **Density:** 25 kg/m<sup>3</sup> | 30 kg/m<sup>3</sup> | 40 kg/m<sup>3</sup>
- **Pool depth:** 1 | 1.5 | 2 m
- **Special features:** Compatible with IGLU 2000, IGLU Combi and overflow gutter system

## 2 Polyline XXL Round Arch Block

- **Length:** 1,250 mm
- **Width:** 250 mm
- **Height:** 500 mm
- **Density:** 25 kg/m<sup>3</sup> | 30 kg/m<sup>3</sup>
- **Pool depth:**  
0 | 1 | 1.25 | 1.5 | 2 | 2.5 | 3 | 3.5 | 5 | 7 m
- **Special features:** Compatible with round arch block from the IGLU 2000 system

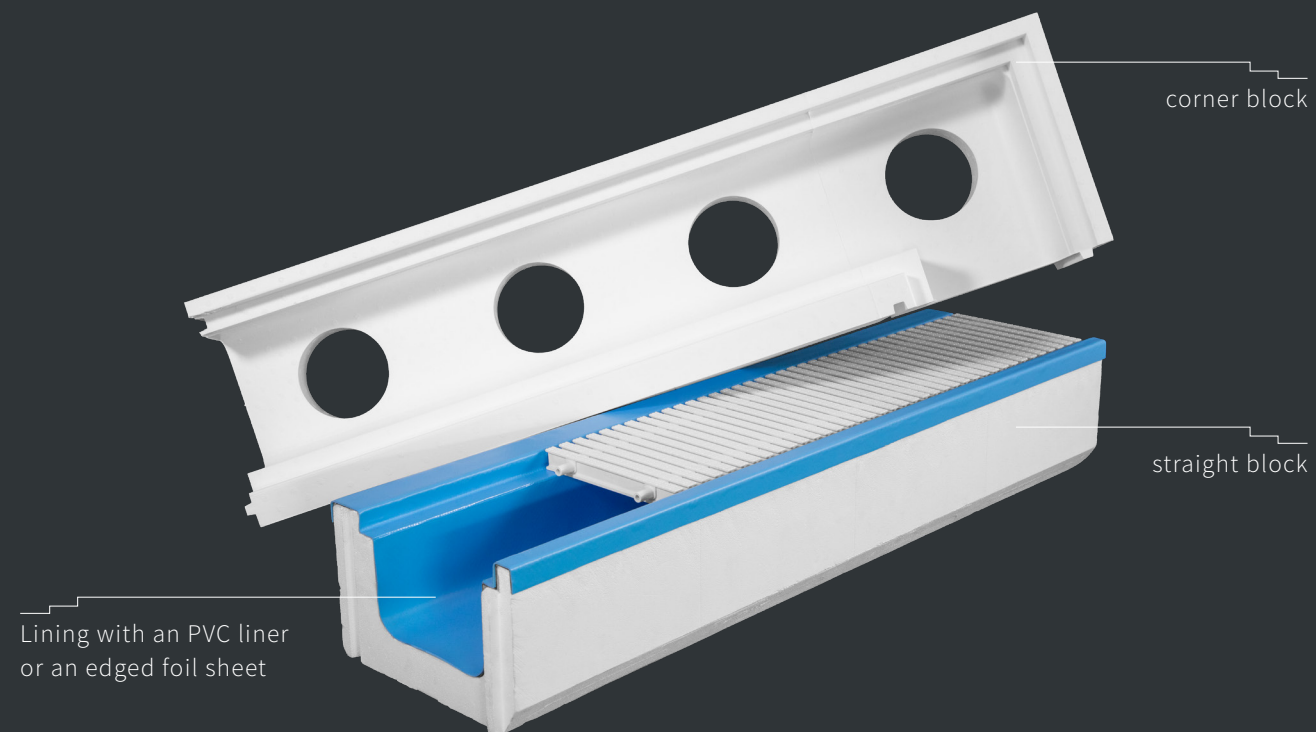
## 3 Clamping Rebate Base Plate

- **Length:** 1,000 mm
- **Width:** 500 mm
- **Height:** 50 mm
- **Density:** 25 kg/m<sup>3</sup> | 40 kg/m<sup>3</sup>



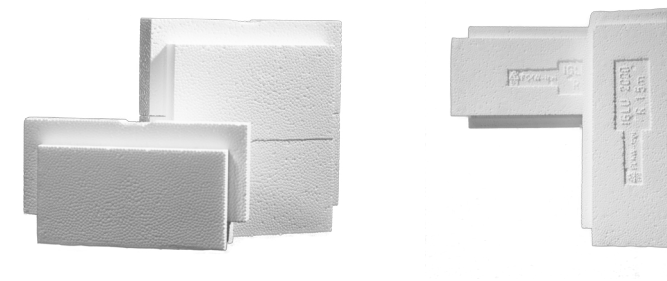
# HIRSCH Overflow Gutter System

- **Length:** 1,000 mm – straight block  
1,020 mm – corner block
- **Width:** 270 mm
- **Height:** 168 mm
- **Density:** 100 kg/m<sup>3</sup>
- **Special features:** Compatible with IGLU 2000, IGLU Combi, Polyline and Partner Stone Massive

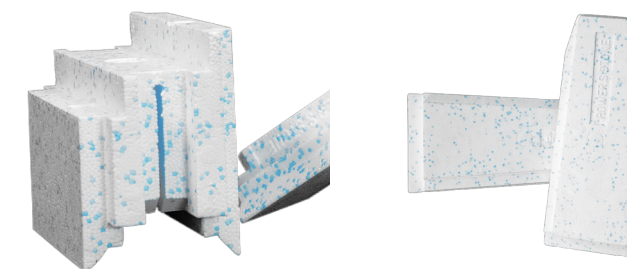


## End Gates and Spread Cotters

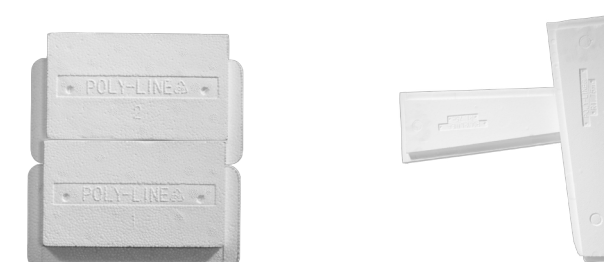
### IGLU 2000 / IGLU Combi



### Power S



### Polyline XXL / Partner Stone Massive







**HIRSCH Porozell GmbH**


A-9555 Glanegg 58, Austria


**T** +43 4277 / 2211 0

**F** +43 4277 / 2211 444

[office.porozell@hirsch-gruppe.com](mailto:office.porozell@hirsch-gruppe.com)

[www.hirsch-gruppe.com](http://www.hirsch-gruppe.com)

 /hirsch.porozell

 /company/hirschporozell

 /HIRSCH Servo Group

© All rights reserved, HIRSCH Porozell GmbH, 2020